



SOLAR STREET LIGHTS

PRODUCT OVERVIEW

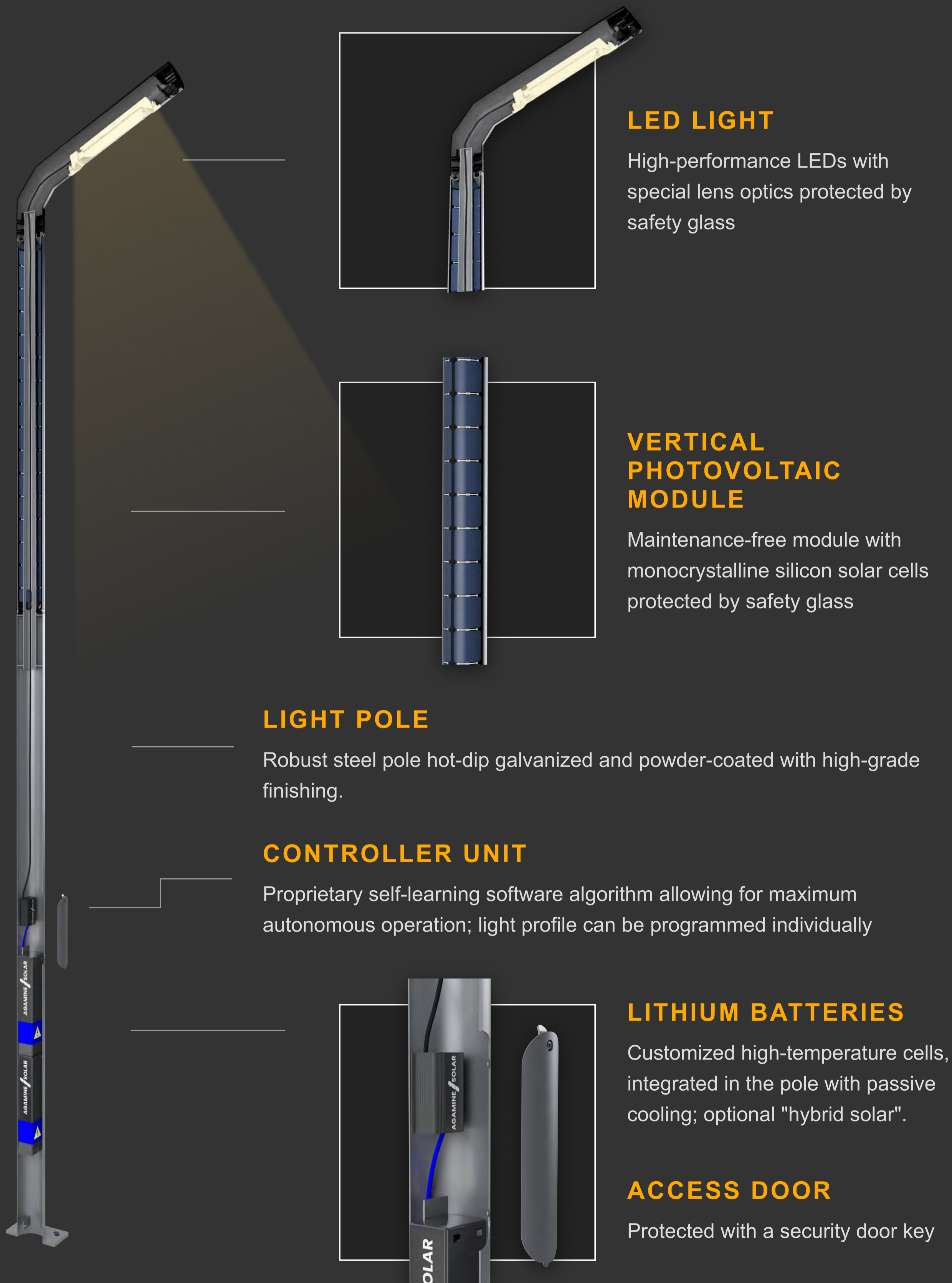
BUILD A BETTER WORLD

We provide solutions to minimize the
environmental impacts on the planet.



OUR DESIGN

The closed and compact construction of our smart streetlights offer reliable performance, even under extreme climatic conditions.



STREET LIGHT MODELS

We offer different models of solar LED street lights for various lighting situations. Whether you want to light up roads, promenades, pathways, squares, parking lots or industrial sites, we provide you a suitable solution with an outstanding design. Our models are available as single or double light poles to suit different lighting requirements. The type of luminaire, color, height and light distribution can be customized.

PREMIUM LINE

Our Premium Line is characterized by elegance and noble design combined with particularly high luminous output.

“AN IDEAL LIGHTING SOLUTION FOR PRESTIGIOUS SQUARES, PARKS AND RESIDENTIAL AREAS.”



SHEMS
Single



SHEMS
Double



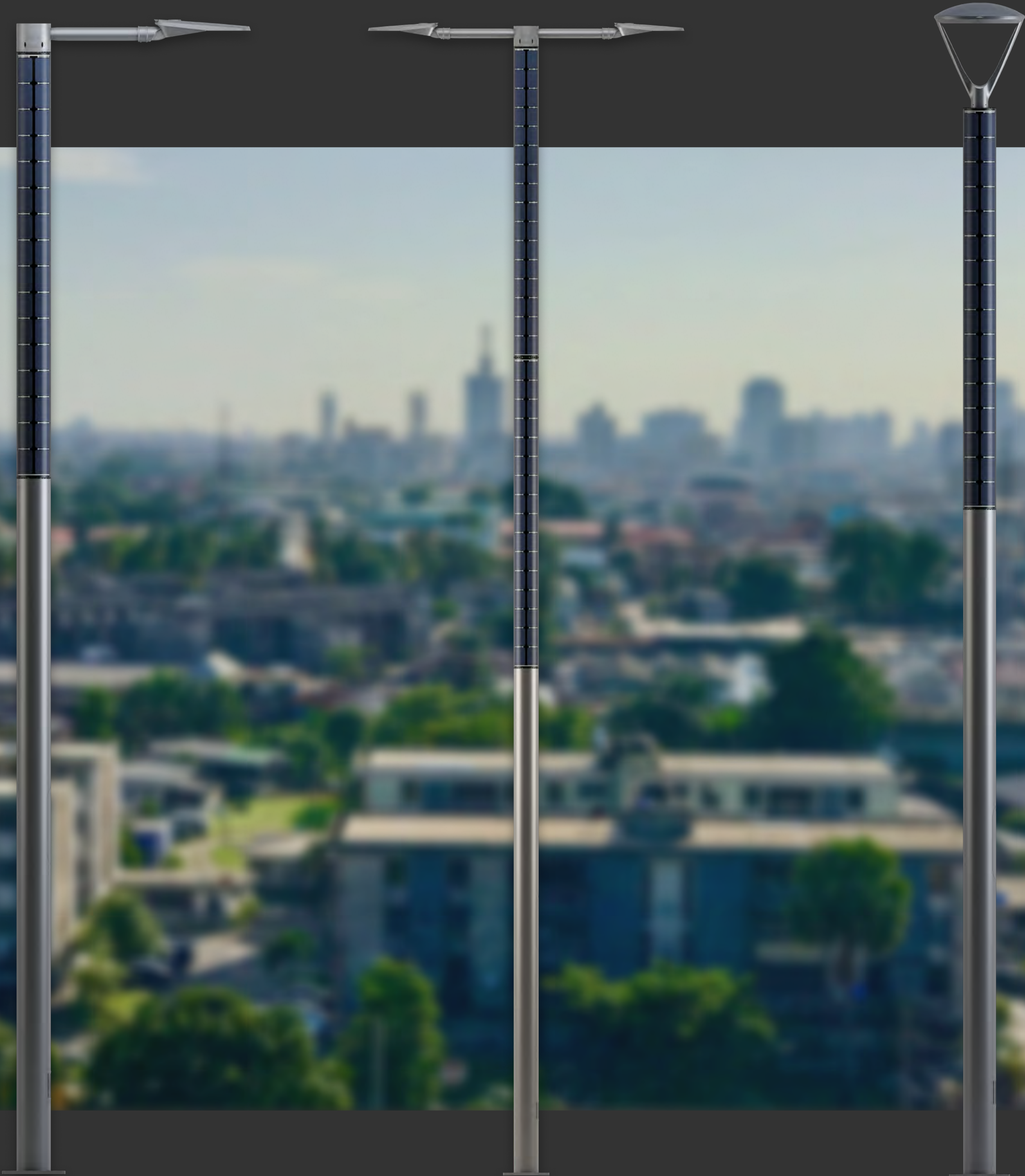
SHEMS
HP

STREET LIGHT MODELS

PERFORMANCE LINE

For the Performance Line we can combine our unique photovoltaic module with a variety of modern LED light fixtures and offer flexible pole height, boom length and angle. We thus provide a variety of different angles of light distribution for various lighting situations.

“THE FLEXIBLE LIGHTING SOLUTION FOR MAJOR ROADS INDUSTRIAL SITES AND PARKING LOTS.”



GAMMA
Single

GAMMA
Double

ALPHA

STREET LIGHT MODELS

DECORATIVE LINE

The decorative line is characterized by modern technology combined with old world architecture to create lighting solutions that honor the past but are built for the future. The street lights can be tailored to different needs and lighting situations whilst offering all our technological benefits.

“AN IDEAL LIGHTING SOLUTION FOR HISTORICAL SITES AND PARKS.”



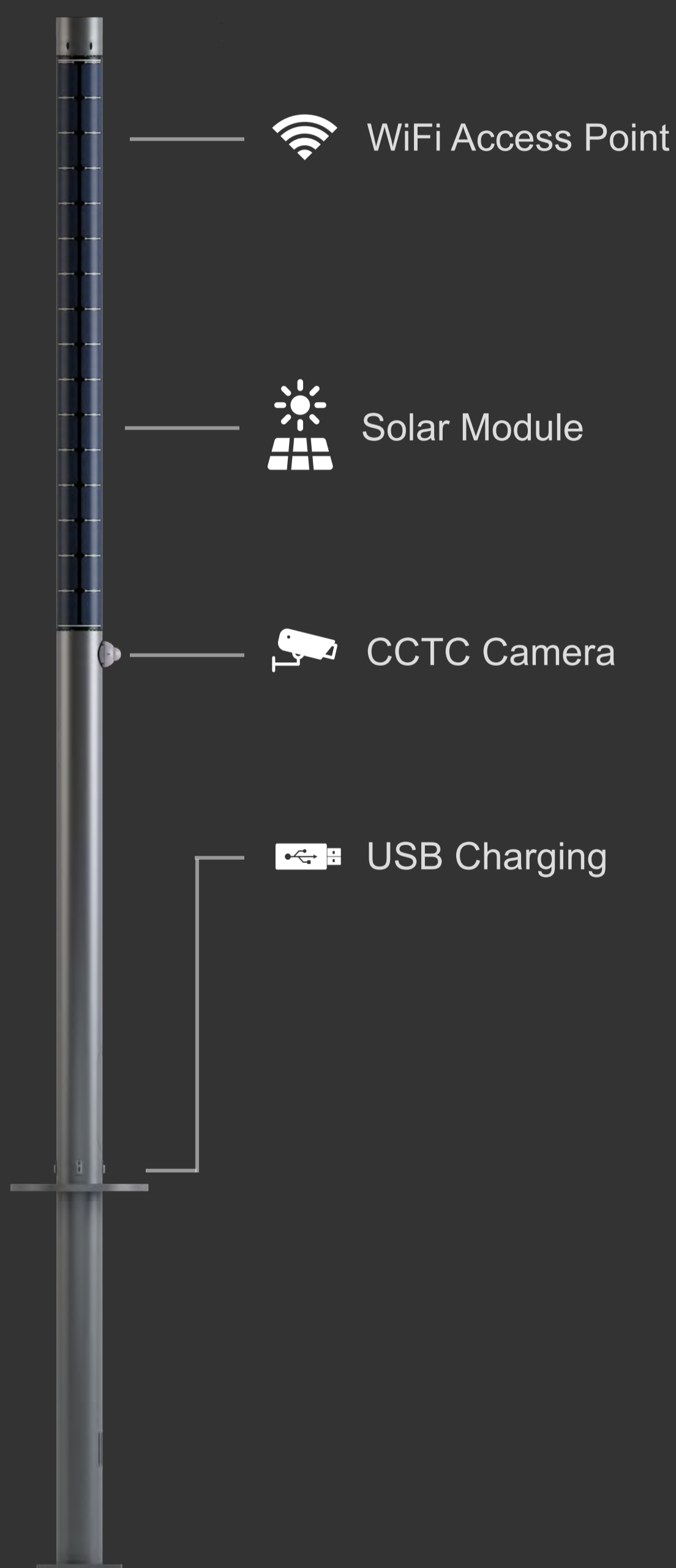
ROYAL
Single

ROYAL
Double

ROYAL
Pedestrian

OTHER SOLAR PRODUCTS

We can integrate our proprietary solar module in various applications thus offering a variety of off-grid solutions. Our experienced team of engineers and designers provides the expertise to meet your project requirements.



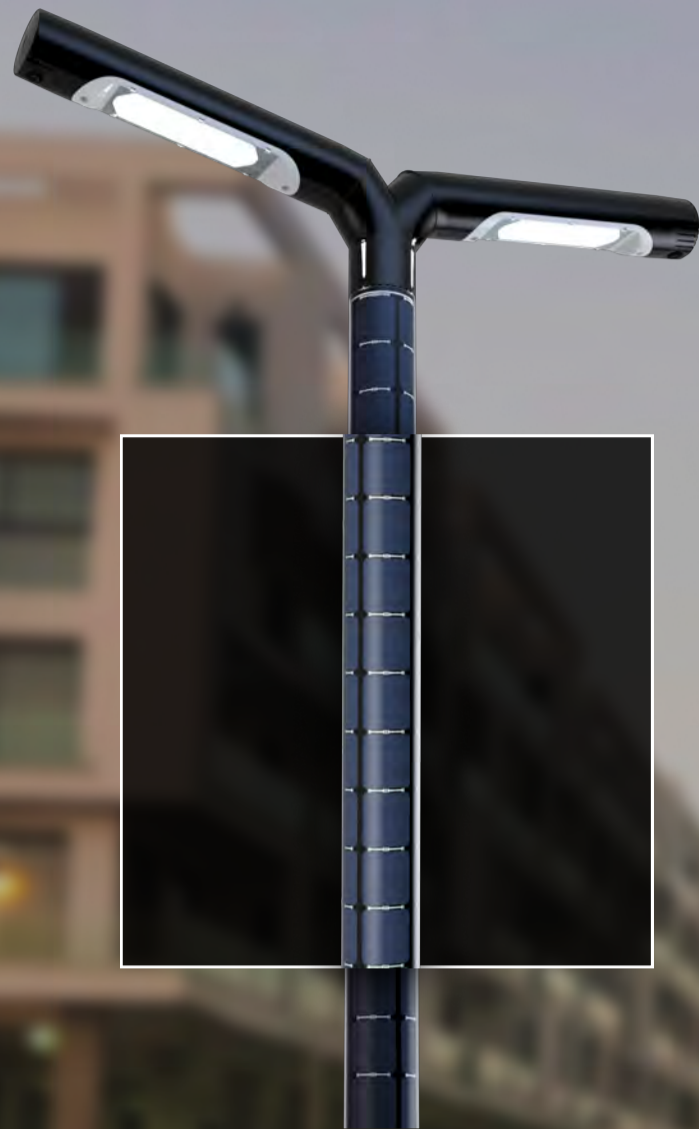
WIFI POLE



TRAFFIC LIGHT

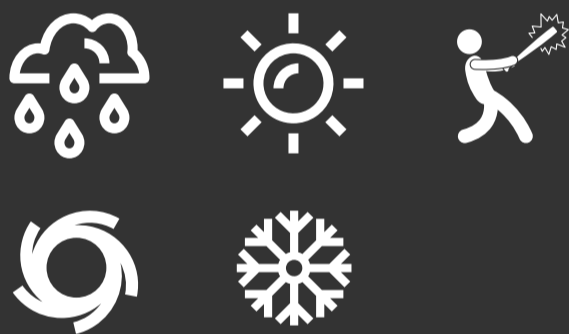
OUR TECHNOLOGY

We combine unique design with state-of-the-art components and thus guarantee outstanding performance, reliability and a long service life.



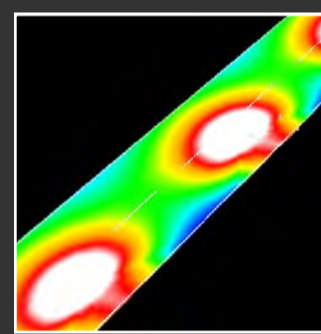
VERTICAL POWER TUBE PV-MODULE

A vertical, cylindrical photovoltaic module with high-performance monocrystalline cells: It can pick up direct and indirect sunlight and is unsusceptible to dust and sand ("self-cleaning").



STRONG CONSTRUCTION

Our outdoor street lighting systems are strong, durable and resistant to environmental impacts and vandalism: water and impact proof, high wind load, safety glass, security key.



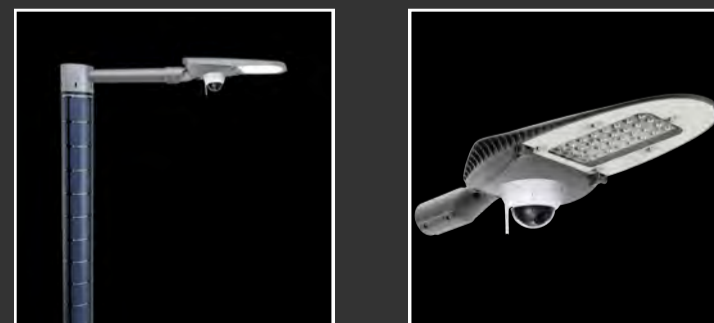
EXCELLENT ILLUMINATION

We offer the best LEDs available on the market with high performance, energy-efficiency and long lifetime. Our custom lenses are designed to focus the light and deliver excellent illumination.



SMART CONTROL AND REMOTE MONITORING

Maximum autonomous operation and light optimization offered by our custom-developed controller. Our products are designed for smart city remote monitoring, if desired.



SURVEILLANCE CAMERA AND EXTENSIBLE FEATURES

Our products have been designed for customization and easy implementation of additional functions such as a surveillance camera, WiFi hotspot, USB charging point, or various sensors.

PROJECTS

WE HAVE SUCCESSFULLY REALIZED PROJECTS IN 30+ COUNTRIES ALL OVER THE WORLD. OUR INSTALLED SOLAR LED STREET LIGHTS PROVE TO BE RELIABLE AND EXCEPTIONALLY EFFECTIVE.



KEY BENEFITS



FULLY AUTONOMOUS & CLEAN

Our off-grid solution allows for 3 days of autonomous operation with no CO² emissions; they are built to last.



RELIABLE & RESISTANT

Our energy self-sufficient lighting systems are strong, durable and resistant to environmental impacts and vandalism. even under extreme climatic conditions.



COST SAVINGS

Our street lights are easy and rapid to install without digging, minimum maintenance and quickly pay back the low initial investment with substantial energy savings.



FLEXIBLE SOLUTIONS

As manufacturer, we can customize our street lights to fit your specific needs: choose the desired height, type of luminaire, color and light distribution to fit your demands. Grid-connected hybrid option available.



ENHANCED WARRANTY

Agamine offers a comprehensive warranty on all parts to ensure the products perform for a very long time.



CUSTOMER SERVICE

With our local contacts we support our customers with lighting design and planning, installation, onsite training and technical assistance.

PLEASE CONTACT US FOR THE LATEST DATA SHEETS AND PRODUCT UPDATES.

ABOUT US

WE BRING LIGHT TO REMOTE AREAS THAT ARE NOT CONNECTED TO THE ELECTRICAL GRID AND HELP OUR CUSTOMERS REDUCE THEIR ENERGY CONSUMPTION AND ENVIRONMENTAL IMPACT.

Agamine develops, manufactures and distributes autonomous and high-performance solar LED street lights.

The company was founded in 2015 by European and Moroccan solar industry and manufacturing experts. Our R&D team is based in Austria and Germany. The headquarters and the ISO 9001 certified manufacturing plant is located in a 50,000 square meter state-of-the-art facility based in Morocco where we produce our proprietary solar modules. We export our products through our regional sales partners across many countries over the world.



HEADOFFICE

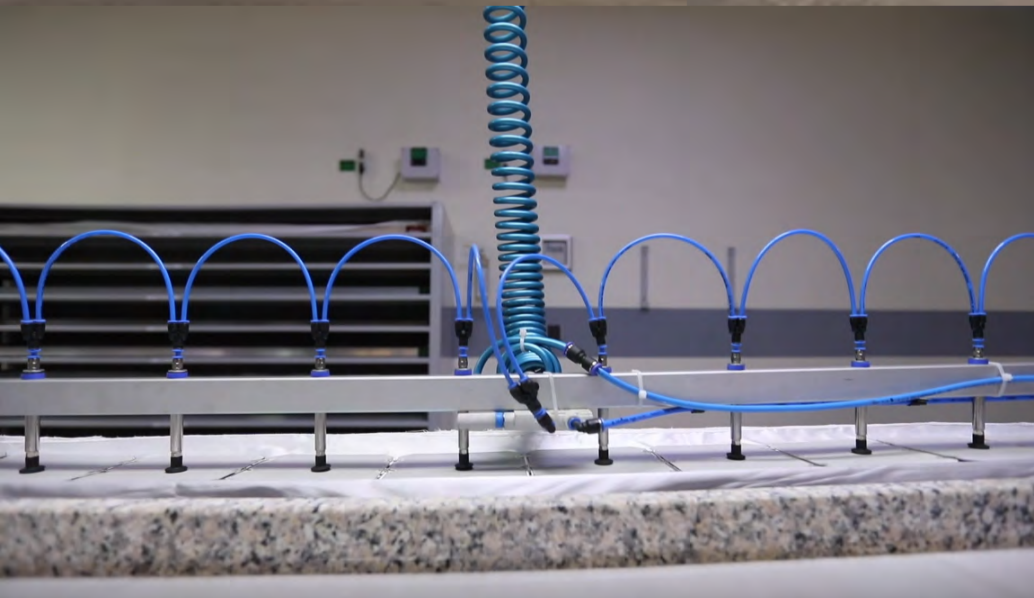
Agamine Sarl

Lot n° 35 A Bd Ibnou Rochd Z.I. Tassila, Agadir
MOROCCO

Phone: +212 528 324 136

agaminesolar@agamine.com

VISIT US ON WWW.AGAMINESOLAR.COM





VISIT US ON WWW.AGAMINESOLAR.COM